

四川 大学

2006 年攻读硕士学位研究生入学考试试题

考试科目: 有机化学(医学)

科目代码: 813#

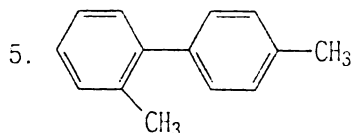
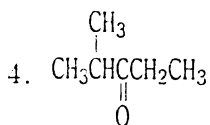
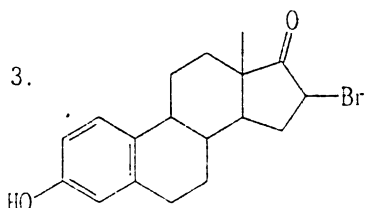
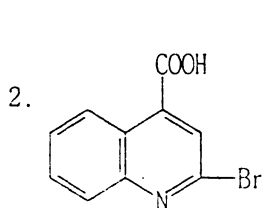
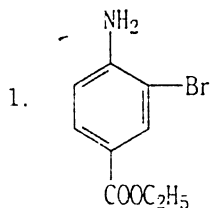
适用专业: 法医学、药物化学、微生物与生化药学

18

(试题共 6 页)

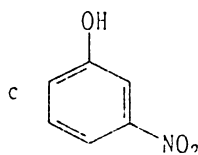
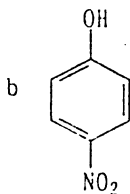
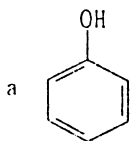
(答案必须写在答题纸上, 写在试题上不给分)

一、命名下列化合物 (15 分)

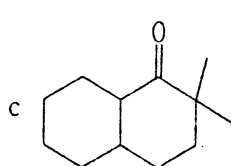
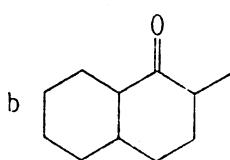
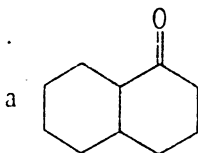


二、根据题意, 按由强到弱或由大到小或由易到难排序 (30 分)

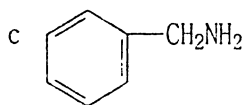
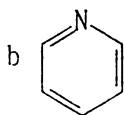
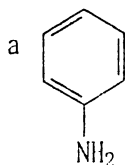
1. 酸性大小:



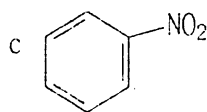
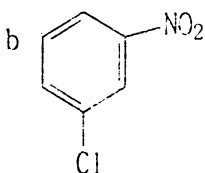
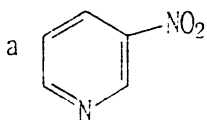
2. 亲核加成活性:



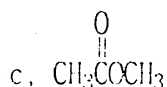
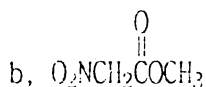
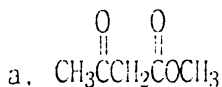
3. 碱性大小:



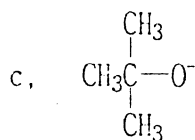
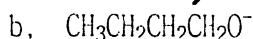
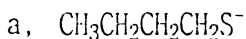
4. 亲电反应活性:



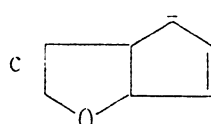
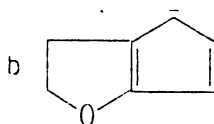
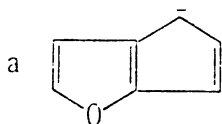
5. 碱水解速度:



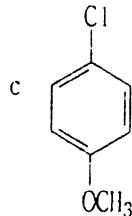
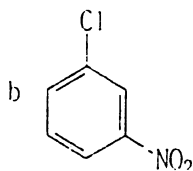
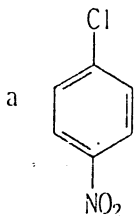
6. 亲核性大小:



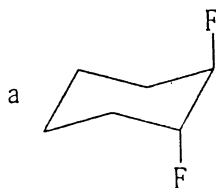
7. 离子稳定性大小:



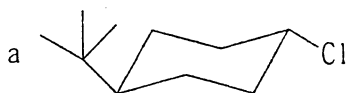
8. 亲核取代反应速度大小:



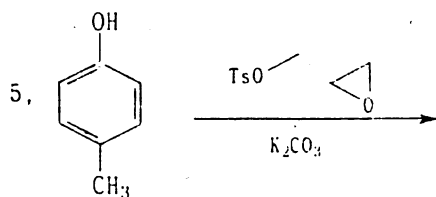
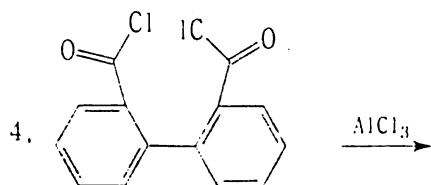
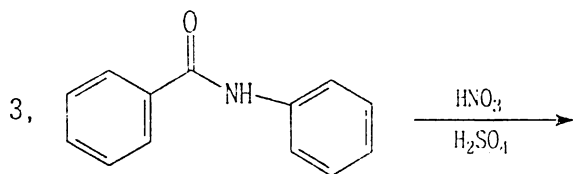
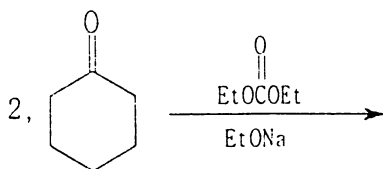
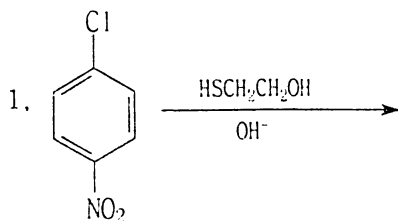
9. 构象稳定性大小:

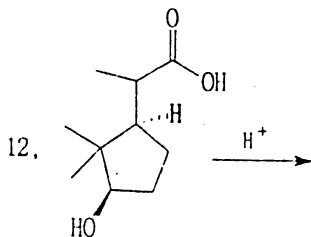
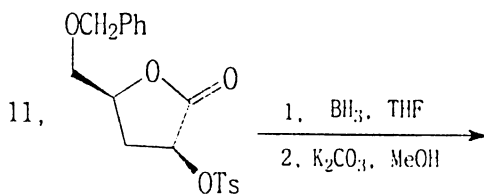
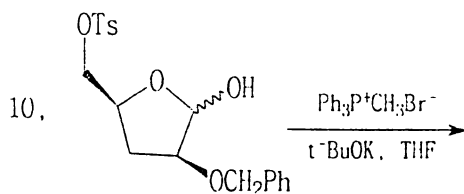
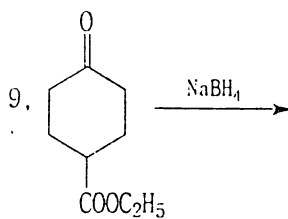
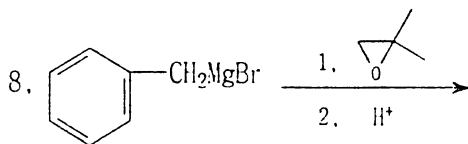
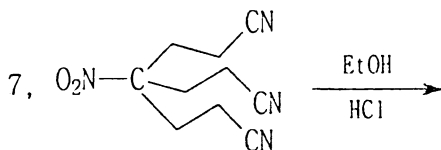
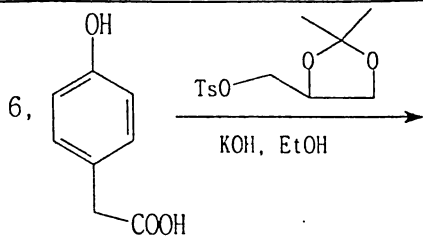


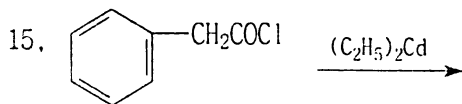
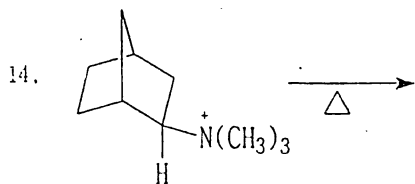
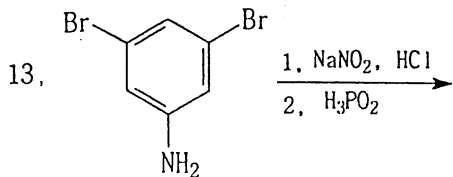
10. E₂ 反应速度:



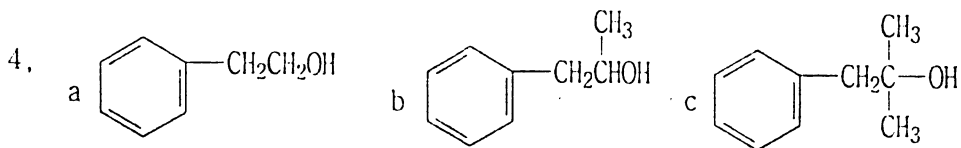
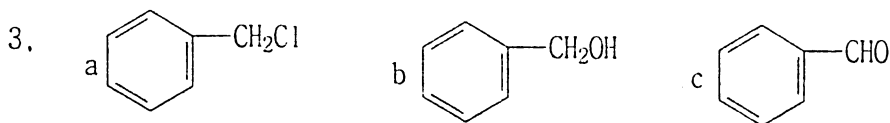
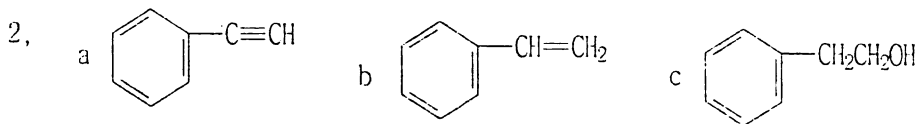
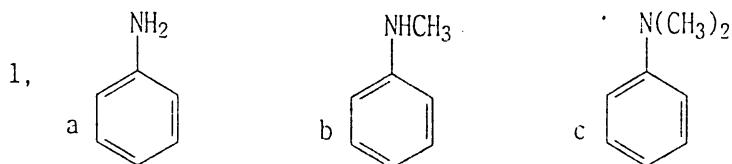
三、完成下列反应式 (30 分):



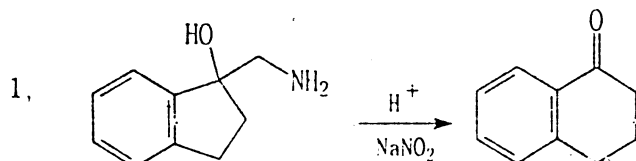




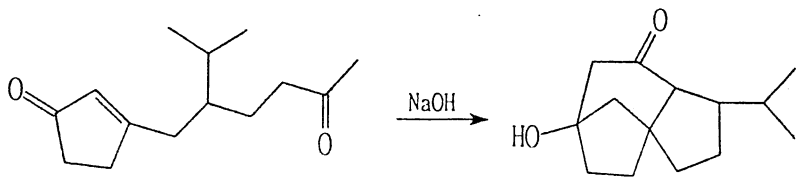
四、用简单化学方法区别下列各组化合物 (20 分)



五、用方程式表示下列转化的机理 (20 分)

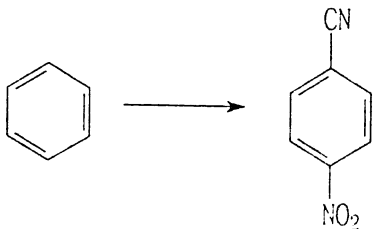


2,

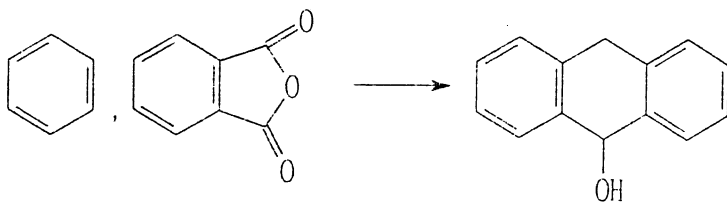


六、由指定原料完成下列转化，其它有机和无机试剂任选 (35 分)

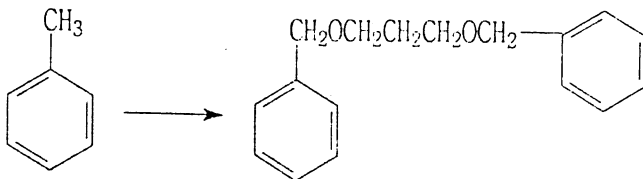
1,



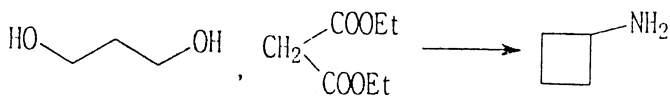
2,



3,



4,



5,

